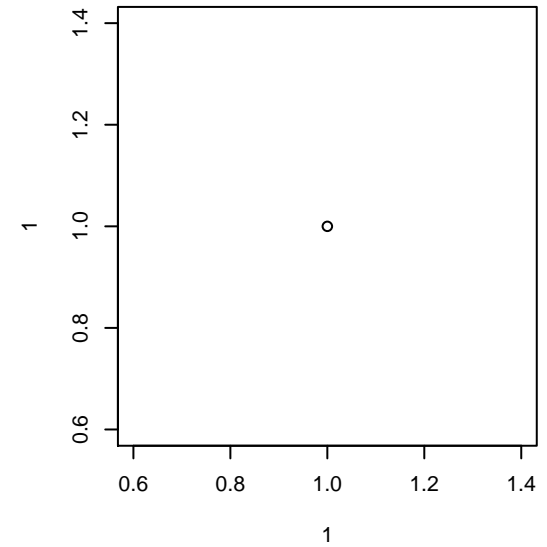


FC Spokane Grey 2 G02

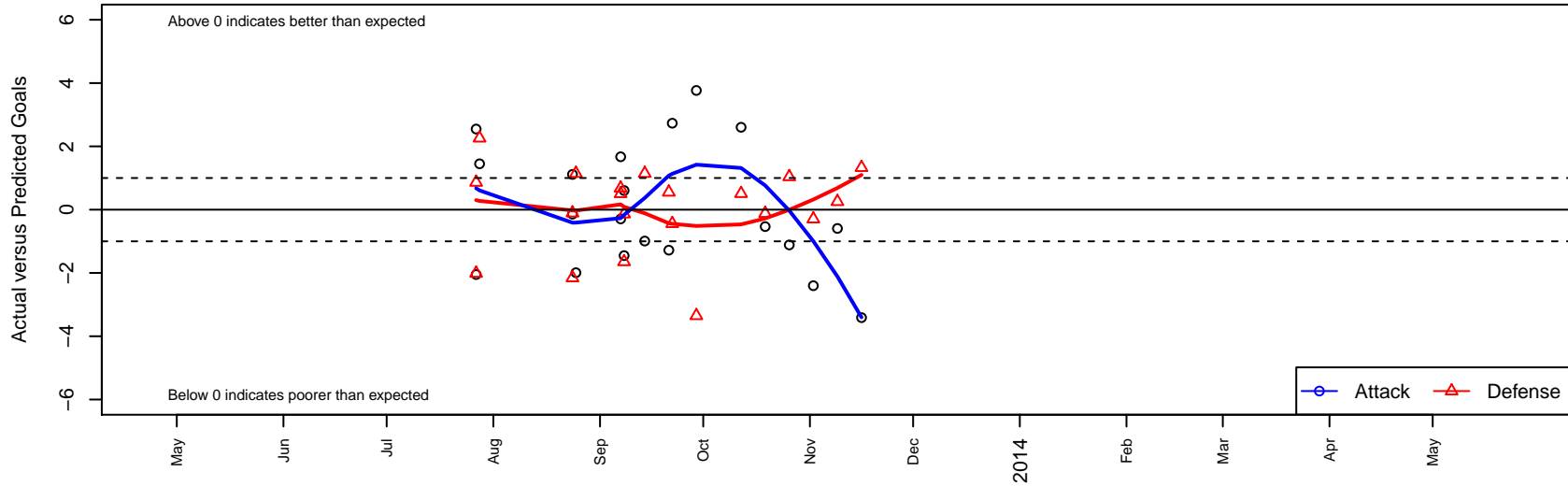
FC Spokane
 Spokane, WA
 G02 total strength=196
 attack=0.23 defense=0.07
 fall league = PSPL-Inland Dev Div 2 U11
 notes= Wilson 2013
 alt names used:

FC Spokane - Wilson [G02]
 FC Spokane G-02 Grey - T.Wilson
 FC SPOKANE G02 - GREY - T.WILSON (WA)
 FC SPOKANE G02 GRAY WILSON (WA)

Venues played:
 River City Cup Girls U-11 Flight 1 U11
 River City Challenge Girls U-11 Flight 1 U11
 Pend Oreille Cup GU11 Silver
 PSPL-Inland Dev Div 2 U11



FC Spokane Grey 2 G02
 Dots are actual minus expected GF (blue circles) and GA (red triangles).
 Blue line is smoothed change in attack strength. Red is smoothed change in defense strength.



	date	home		away		venue	pred.home	pred.away
2805	2013-11-16	FC Spokane Grey 2 G02	1	CWSA Grey G02	0	PSPL-Inland Dev Div 2 U11	4.4	1.33
2693	2013-11-09	ASE Navy G02	1	FC Spokane Grey 2 G02	3	PSPL-Inland Dev Div 2 U11	1.3	3.59
2567	2013-11-02	Spokane Foxes White G02	1	FC Spokane Grey 2 G02	5	PSPL-Inland Dev Div 2 U11	0.7	7.40
2419	2013-10-26	FC Spokane Grey 2 G02	6	CB United G02	1	PSPL-Inland Dev Div 2 U11	7.1	2.04
2286	2013-10-19	Cobra Turf Queens G02	3	FC Spokane Grey 2 G02	4	PSPL-Inland Dev Div 2 U11	2.9	4.53
2134	2013-10-12	FC Spokane Grey 2 G02	7	ASE Morgan G03	2	PSPL-Inland Dev Div 2 U11	4.4	2.51
1835	2013-09-29	FC Spokane Grey 2 G02	11	CWSA Navy G02	6	PSPL-Inland Dev Div 2 U11	7.2	2.65
1675	2013-09-22	FC Spokane Grey 2 G02	7	Wenatchee Fire Black Gundrsen G02	3	PSPL-Inland Dev Div 2 U11	4.3	2.56
1613	2013-09-21	Breakers Schroeder G02	1	FC Spokane Grey 2 G02	6	PSPL-Inland Dev Div 2 U11	1.6	7.28
1450	2013-09-14	Sandpoint Strikers G02	1	FC Spokane Grey 2 G02	3	PSPL-Inland Dev Div 2 U11	2.1	3.99
1346	2013-09-08	CDA Sting Sounders G02	4	FC Spokane Grey 2 G02	2	Pend Oreille Cup GU11 Silver	2.4	1.40
1352	2013-09-08	CDA Sting Timbers G02	3	FC Spokane Grey 2 G02	2	Pend Oreille Cup GU11 Silver	2.9	3.45
1267	2013-09-07	FC Spokane Grey 2 G02	4	Spokane Foxes Emerald G02	3	Pend Oreille Cup GU11 Silver	2.3	3.50
1271	2013-09-07	FC Spokane Grey 2 G02	8	SSC Shadow Morgan G02	0	Pend Oreille Cup GU11 Silver	8.3	0.68
1113	2013-08-25	FC Spokane Grey 2 G02	2	Sandpoint Strikers G02	1	River City Challenge Girls U-11 Flight 1 U11	4.0	2.14
1070	2013-08-24	FC Spokane Grey 2 G02	1	Breakers Merritt G02	6	River City Challenge Girls U-11 Flight 1 U11	1.1	3.84
1072	2013-08-24	FC Spokane Grey 2 G02	6	FC Spokane Grey 1 G02	2	River City Challenge Girls U-11 Flight 1 U11	4.9	1.89
584	2013-07-28	FC Spokane Grey 2 G02	3	The Acedemy Idaho G02	2	River City Cup Girls U-11 Flight 1 U11	1.6	4.26
558	2013-07-27	FC Spokane Grey 2 G02	6	CDA Sting Timbers G02	2	River City Cup Girls U-11 Flight 1 U11	3.5	2.86
562	2013-07-27	FC Spokane Grey 2 G02	4	FC Spokane Black G02	4	River City Cup Girls U-11 Flight 1 U11	6.0	1.99